

4 Anteprojeto

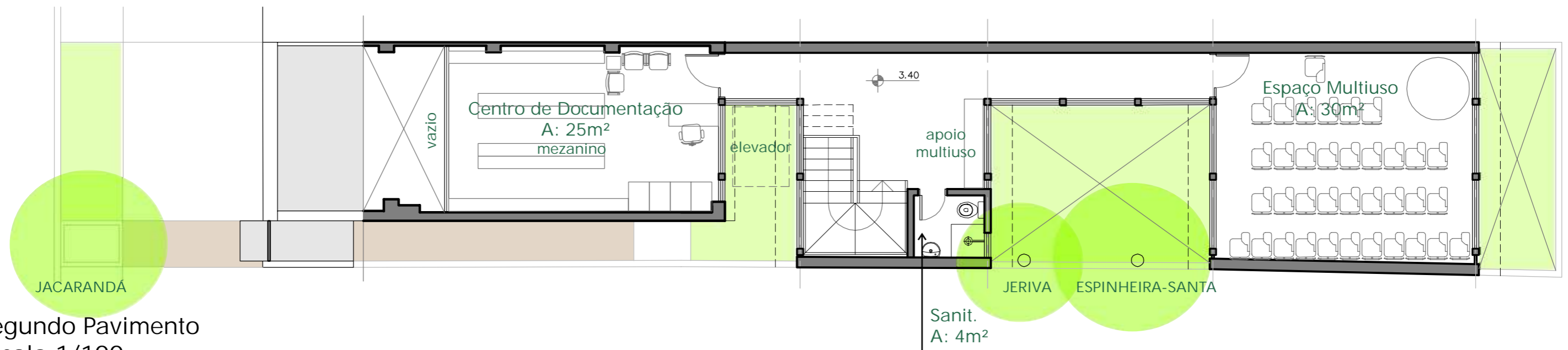


Sede Núcleo Amigos da Terra/Brasil - Centro de Documentação Magda Renner
Centro de Referência para Edificações Sustentáveis em Meio Urbano
Projeto de Reforma e Intervenção Arquitetônica - Porto Alegre - RS/Brasil

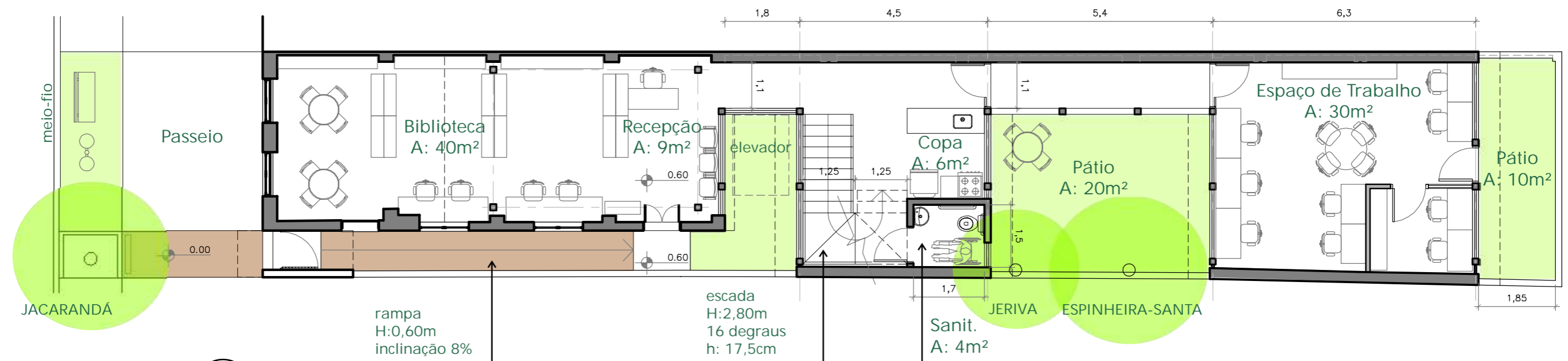


Projeto CasaNat
Criação em Arquitetura
Socioambiental para o
Núcleo Amigos da Terra

Anteprojeto
Plantas Baixas



Segundo Pavimento
escala:1/100



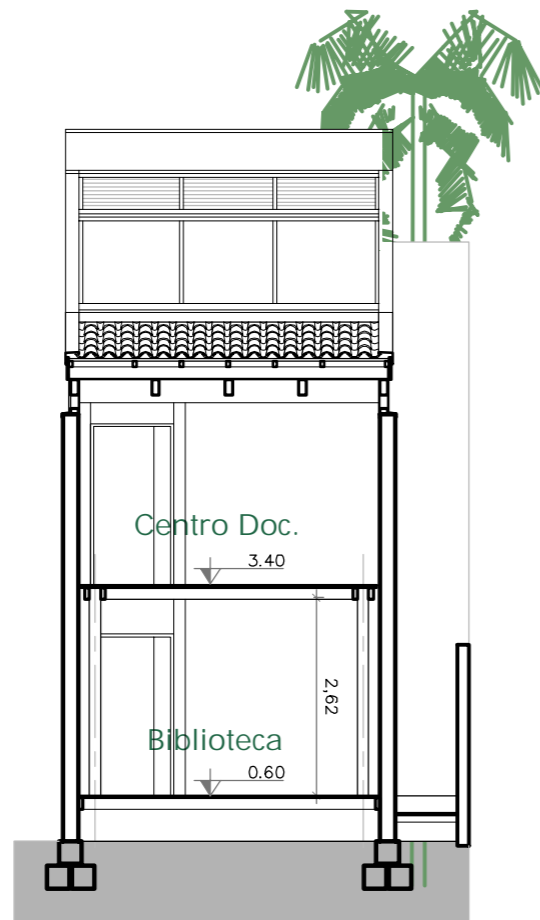
Térreo
escala:1/100



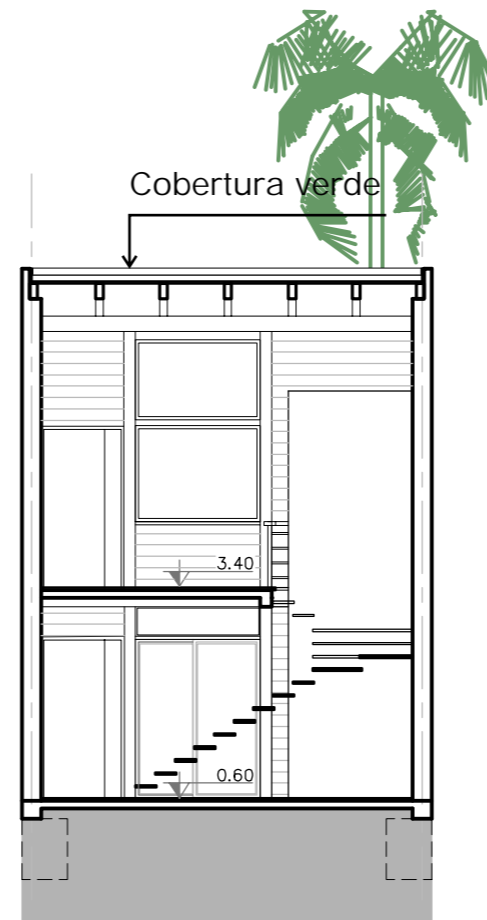
Cortes Transversais



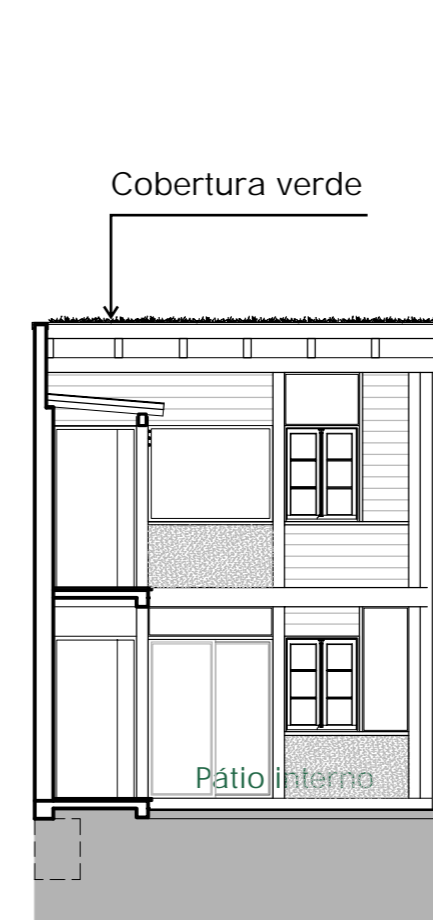
Fachada principal
escala:1/100



Corte AA
escala:1/100



Corte BB
escala:1/100



Corte CC
escala:1/100

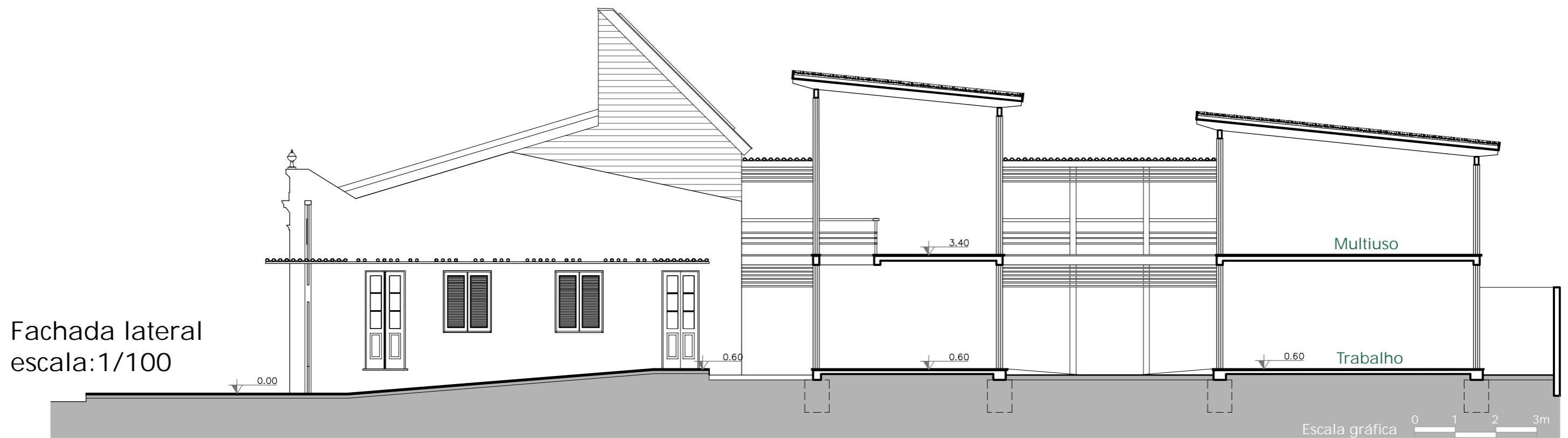
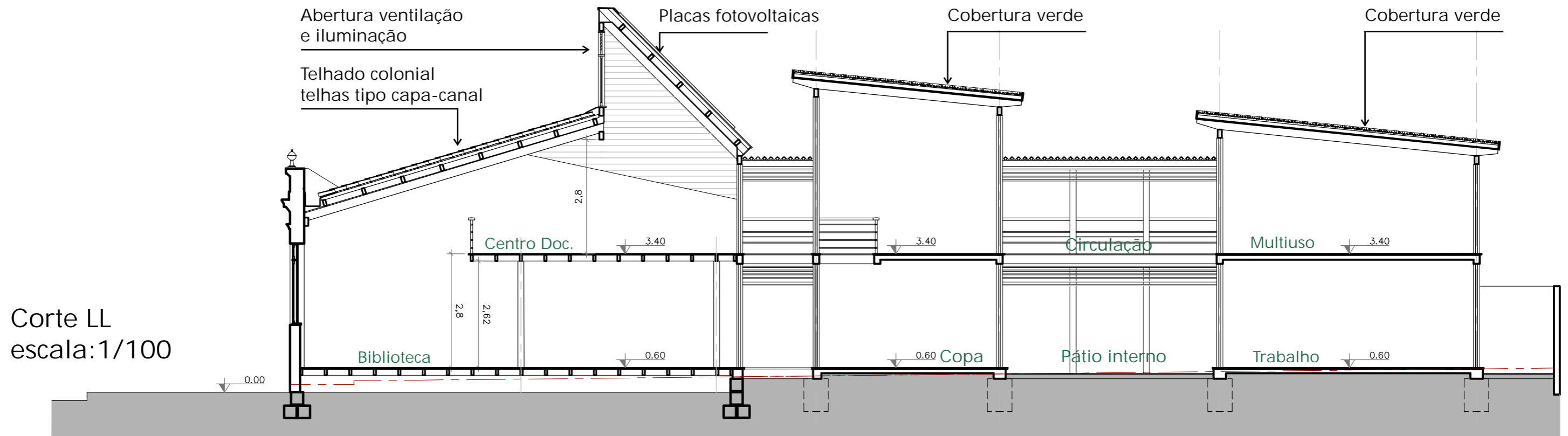


Corte DD
escala:1/100

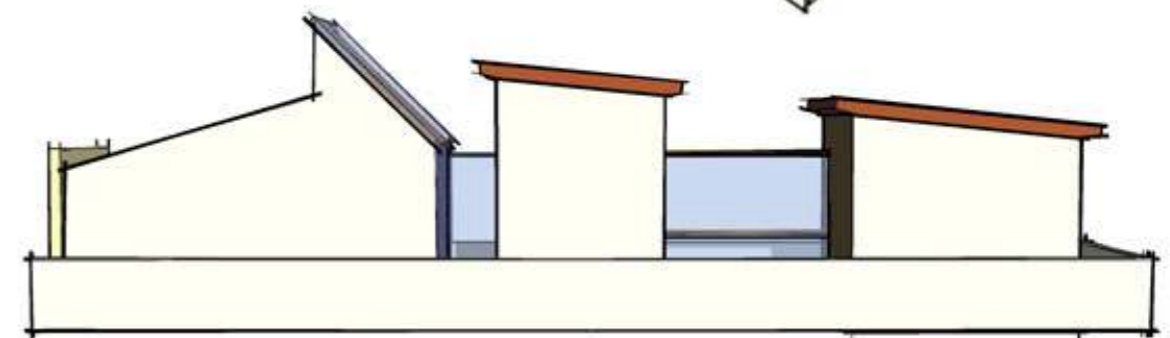
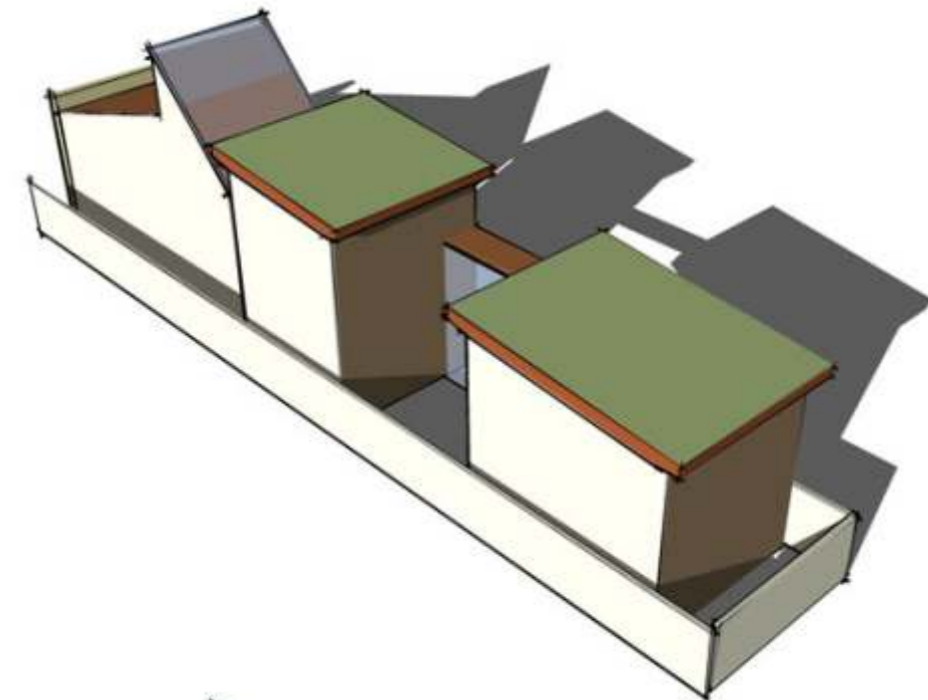
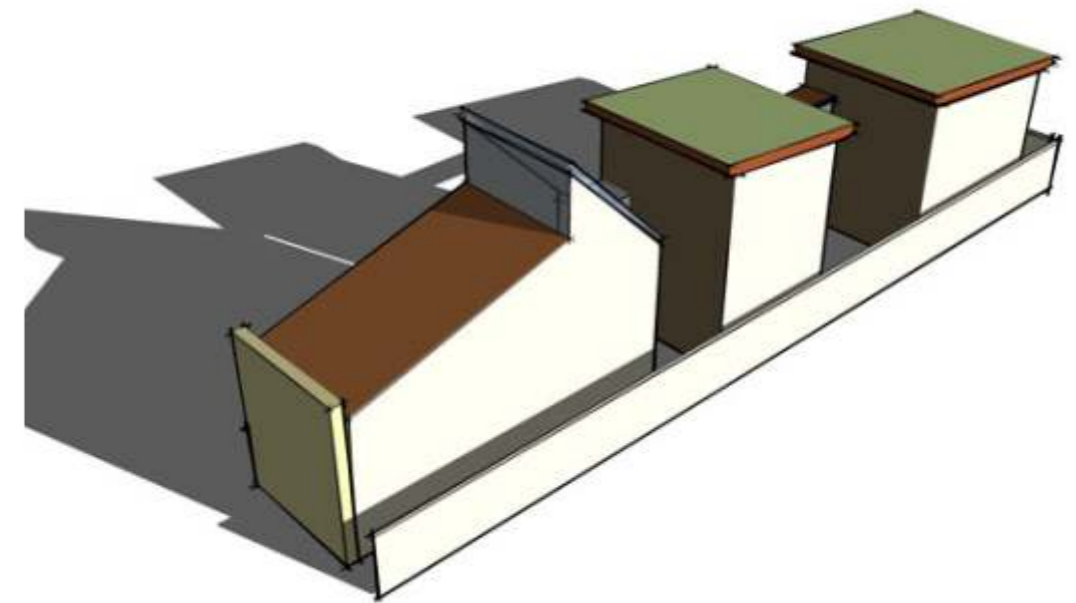
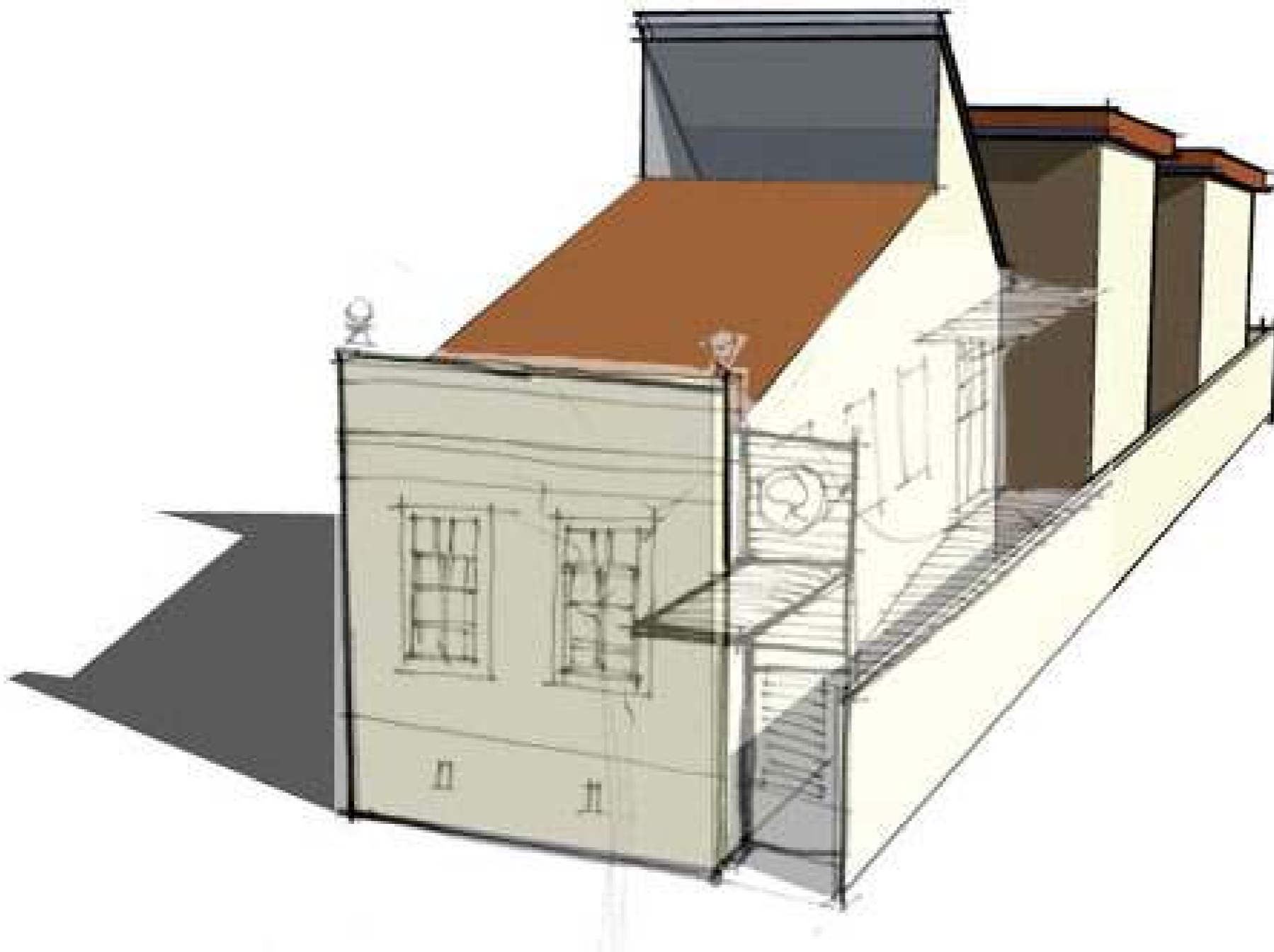
Escala gráfica 0 1 2 3m



Corte Longitudinal

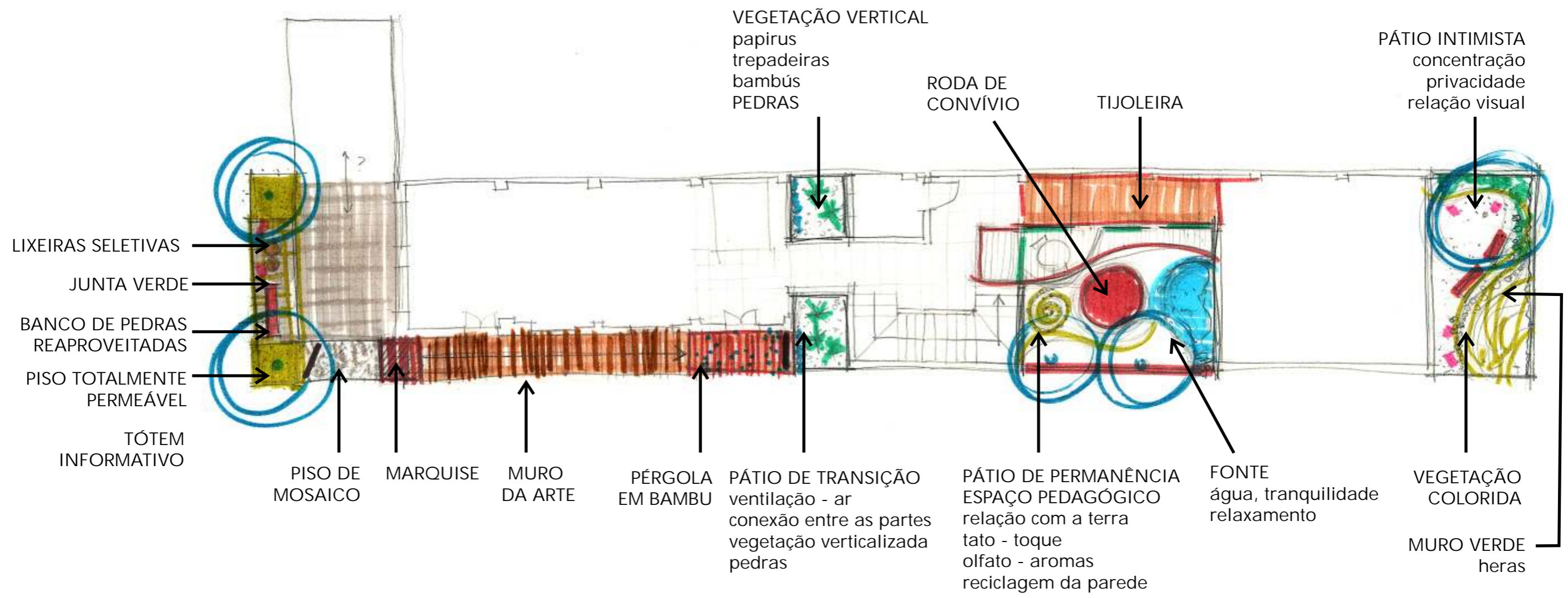
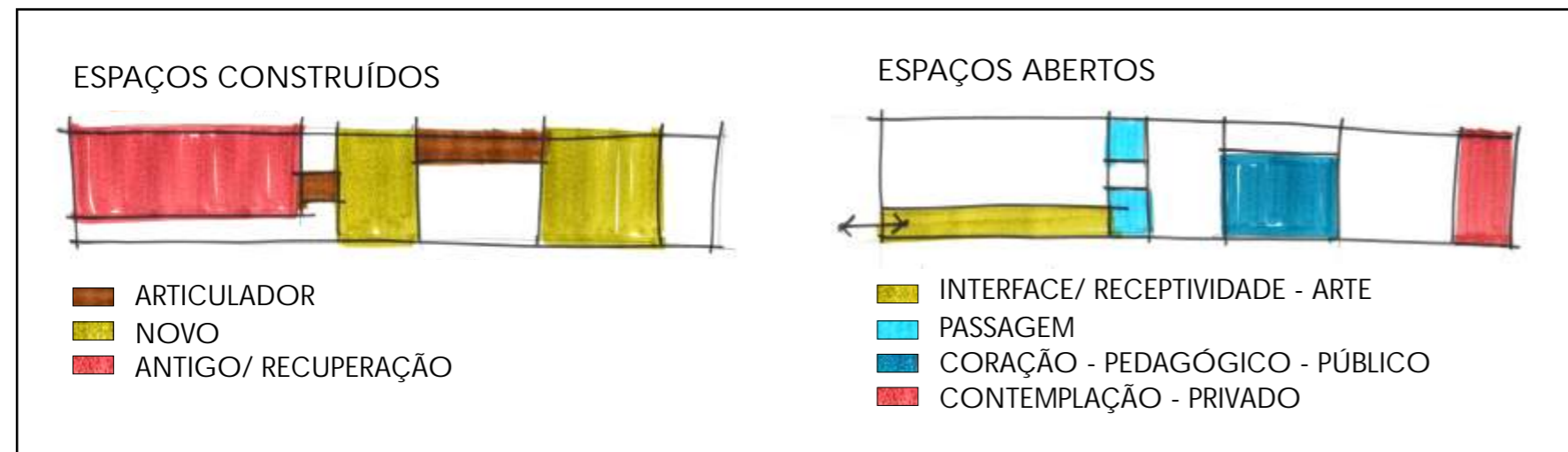


Anteprojeto
Volumetria



Friends of the Earth

Anteprojeto
Paisagismo



Instalações complementares

